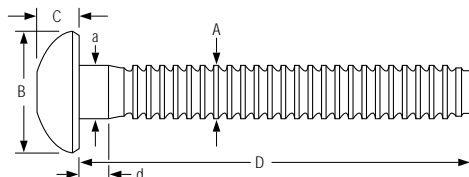
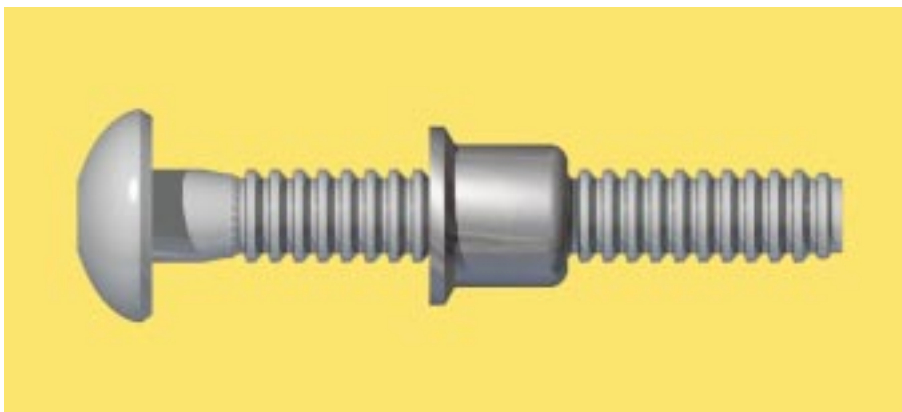


Magna-Grip® LockBolt™

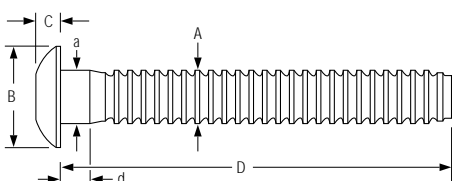
Grade 2 fastener that resists loosening. Widely known as the most reliable wide grip fastening system there is—the HUCK Magna-Grip® fastener also provides vibration resistance and high uniform installed values.



Button Head MGPB

Dimensional Data – Button Head

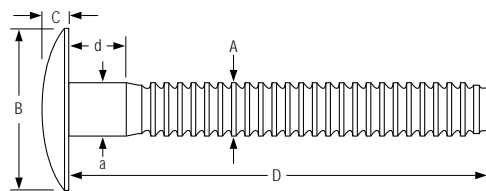
Dia. (No.)	Grip Number	Grip Range	Hole Size max	A	B	C	D <small>+ .025 - .000</small>	a ref	d ref
3/16	10	.062 - .625	.203	.183-.187	.356-.394	.113-.125	1.788	.191-.195	.103-.125
	(6) 20	.312 - 1.250	.203	.183-.187	.356-.394	.113-.125	2.730	.191-.195	.304-.320
1/4	10	.062 - .625	.265	.245-.249	.475-.525	.136-.152	1.965	.250-.259	.109-.141
	(8) 20	.312 - 1.250	.265	.245-.249	.475-.525	.136-.152	2.560	.250-.259	.295-.329
5/16	12	.125 - .750	.328	.307-.311	.594-.656	.181-.201	2.340	.274-.283	.251-Max.
	(10) 22	.625 - 1.375	.328	.307-.311	.594-.656	.181-.201	2.840	.317-.322	.533-.567
3/8	14	.125 - .875	.390	.369-.375	.713-.787	.223-.248	2.875	.380-.385	.172-.204
	(12) 26	.812 - 1.625	.390	.369-.375	.713-.787	.223-.248	3.500	.380-.385	.794-.826



Truss Head MGPT

Dimensional Data – Truss Head

Dia. (No.)	Grip Number	Grip Range	Hole Size max	A	B	C	D <small>+ .025 - .000</small>	a ref	d ref
1/4	10	.062 - .625	.265	.245-.249	.531-.594	.103-.115	1.965	.250-.259	.109-.141
	(8) 20	.312 - 1.250	.265	.245-.249	.531-.594	.103-.115	2.560	.250-.259	.295-.329
5/16	12	.125 - .750	.328	.307-.311	.703-.797	.127-.141	2.340	.274-.283	.251-Max.
	(10) 22	.625 - 1.375	.328	.307-.311	.703-.797	.127-.141	2.840	.317-.322	.533-.567
3/8	14	.125 - .875	.390	.369-.375	.828-.922	.152-.168	2.875	.380-.385	.172-.204
	(12) 26	.812 - 1.625	.390	.369-.375	.828-.922	.190-.200	3.500	.380-.385	.794-.826

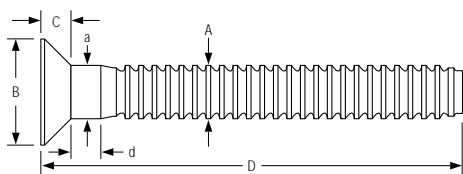


Broad Truss Head MGP30

Dimensional Data – Broad Truss Head

Dia. (No.)	Grip Number	Grip Range	Hole Size max	A	B	C	D $+0.025 - .000$	a ref	d ref
1/4	10	.062 - .625	.265	.245-.249	**	.138-.162	1.965	.250-.259	.109-.141
	(8)	24	.625 - 1.50	.265	.245-.249	**	2.810	.250-.259	.546-.578
3/8	24	.625 - 1.50	.390	.369-.375	1.188-1.250	.188-.212	3.375	.380-.385	.664-.696
	(12)	32	1.125 - 2.00	.390	.369-.375	1.188-1.250	3.875	.380-.385	1.164-1.196

** Steel .937 Aluminum 1.063

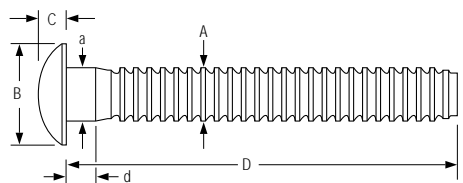


90° Flush Head MGP90

Dimensional Data – 90° Flush Head

Dia. (No.)	Grip Number	Grip Range	Hole Size max	A	B	C	D $+0.025 - .000$	a ref	d ref
3/16	10	.062 - .625	.203	.183-.187	.323-.359	.092-.102	1.788	.191-.195	.109-.141
	(6)	20	.312 - 1.250	.203	.183-.187	.076-.087	2.370	.191-.195	.295-.329
1/4	10	.062 - .625	.265	.245-.249	.433-.478	.119-.128	1.965	.217-.226	.141-.181
	(8)	20	.312 - 1.250	.265	.245-.249	.102-.115	2.560	.250-.259	.295-.329
5/16	12	.125 - .750	.328	.307-.311	.542-.594	.149-.162	2.340	.275-.280	.166-.206
	(10)	22	.625 - 1.375	.328	.307-.311	.129-.142	2.840	.317-.322	.559-.591
3/8	14	.250 - .875	.390	.369-.375	.651-.714	.178-.195	2.875	.337-.342	.229-.269
	(12)	26	.812 - 1.625	.390	.369-.375	.153-.170	3.500	.380-.385	.793-.827

1 "d" dimension is not applicable to short grip parts



Rivet Head MGP98T

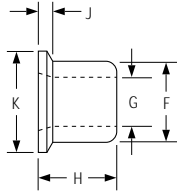
Dimensional Data – Rivet Head

Dia. (No.)	Grip Number	Grip Range	Hole Size max	A	B	C	D $+0.025 - .000$	a ref	d ref
3/16	10	.062 - .625	.203	.183-.187	.450-.488	.91-.105	1.801	.189-.196	.078-.096
	(6)	20	.312 - 1.250	.203	.183-.187	.91-.105	2.383	.189-.196	.303-.321

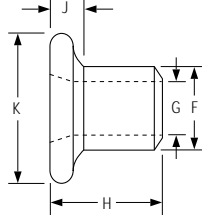
Installed Values in Nominal Grip (lbs.)

		Aluminum	Steel
3/16	Shear	750	1725
	Tensile	900	1400
	Clamp	550	925
1/4	Shear	1200	2200
	Tensile	1620	2550
	Clamp	950	1200

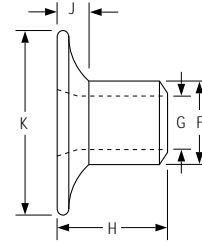
		Aluminum	Steel
5/16	Shear	2200	3000
	Tensile	2500	3910
	Clamp	1600	2150
3/8	Shear	3000	4200
	Tensile	4000	5625
	Clamp	2400	3200



Standard Flange MGC



Medium Flange MGCS



Wide Flange MGCW

Collar Dimensions

Collar	Diameter	F	G	H	J	K
MGC	3/16	.307-.313	.189-.195	.265-.285	.040-.052	.365-.385
	1/4	.399-.405	.250-.260	.360-.390	.055-.070	.480-.520
	5/16	.501-.509	.312-.320	.430-.446	.069-.086	.605-.645
	3/8	.603-.611	.376-.384	.490-.520	.086-.100	.730-.770
MGCS	3/16	.308-.315	.189-.195	.290-.320	.085-.115	.495-.535
MGCW	3/16	.307-.314	.189-.195	.290-.320	.090-.115	.640-.754
	1/4	.399-.405	.250-.260	.432-.462	.115-.145	.855-1.00

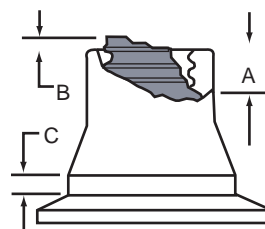
Installation Tooling

Dia.	Installation Tool	Nose Assembly	Type	Use
3/16	230	99-3201	Pneudraulic	Maintenance & Repair
	2025	99-3201	Pneudraulic	Maintenance & Repair
	212	99-3201	Pneudraulic	Production
	245	99-3206	Pneudraulic	Production
	246	99-3206	Pneudraulic	Production
	2480	99-3201	Hydraulic	Production
	2580	99-3206	Hydraulic	Production
1/4	230	99-3204	Pneudraulic	Maintenance & Repair
	2025	99-3204	Pneudraulic	Maintenance & Repair
	212	99-3204	Pneudraulic	Production
	245	99-3207	Pneudraulic	Production
	246	99-3207	Pneudraulic	Production
	2480	99-3204	Hydraulic	Production
	2580	99-3207	Hydraulic	Production
5/16	245	99-1439	Pneudraulic	Production
	246	99-1439	Pneudraulic	Production
	2580	99-1439	Hydraulic	Production
	2600	99-3217	Pneudraulic	Production
3/8	245*	99-1440	Pneudraulic	Production
	246	99-1440	Pneudraulic	Production
	2580	99-1440	Hydraulic	Production
	2600	99-3220	Hydraulic	Production
	FE5901	99-1492	Hydraulic	Production
	5901	H99-1492	Hydraulic	Production

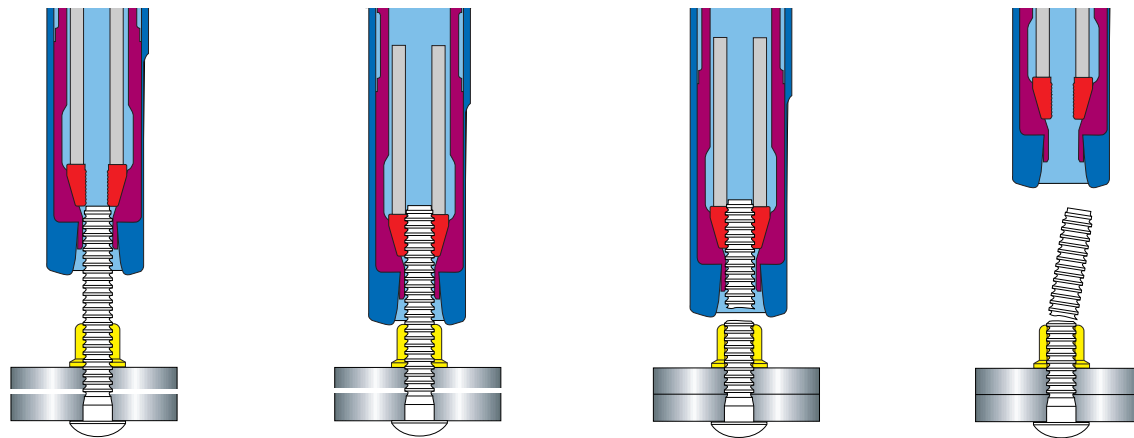
* Note: Aluminum Only

Inspection Data

Dia.	A max	B max	C max
3/16	1/16	1/32	.050
1/4	1/8	3/32	.100
5/16	3/16	9/64	.100
3/8	1/4	11/64	.100



Installation Sequence

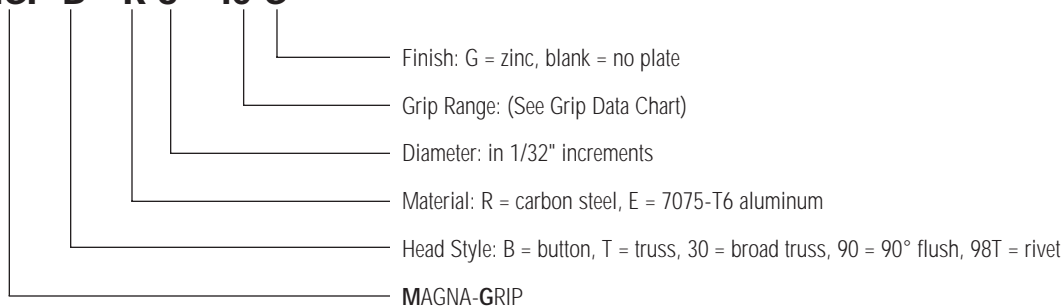


[Click Here to view animation of installation sequence](#)

Part Number Identification

Magna-Grip Pins

MGP B - R 8 - 10 G



Magna-Grip Collars

MG C - R 8 U L

